



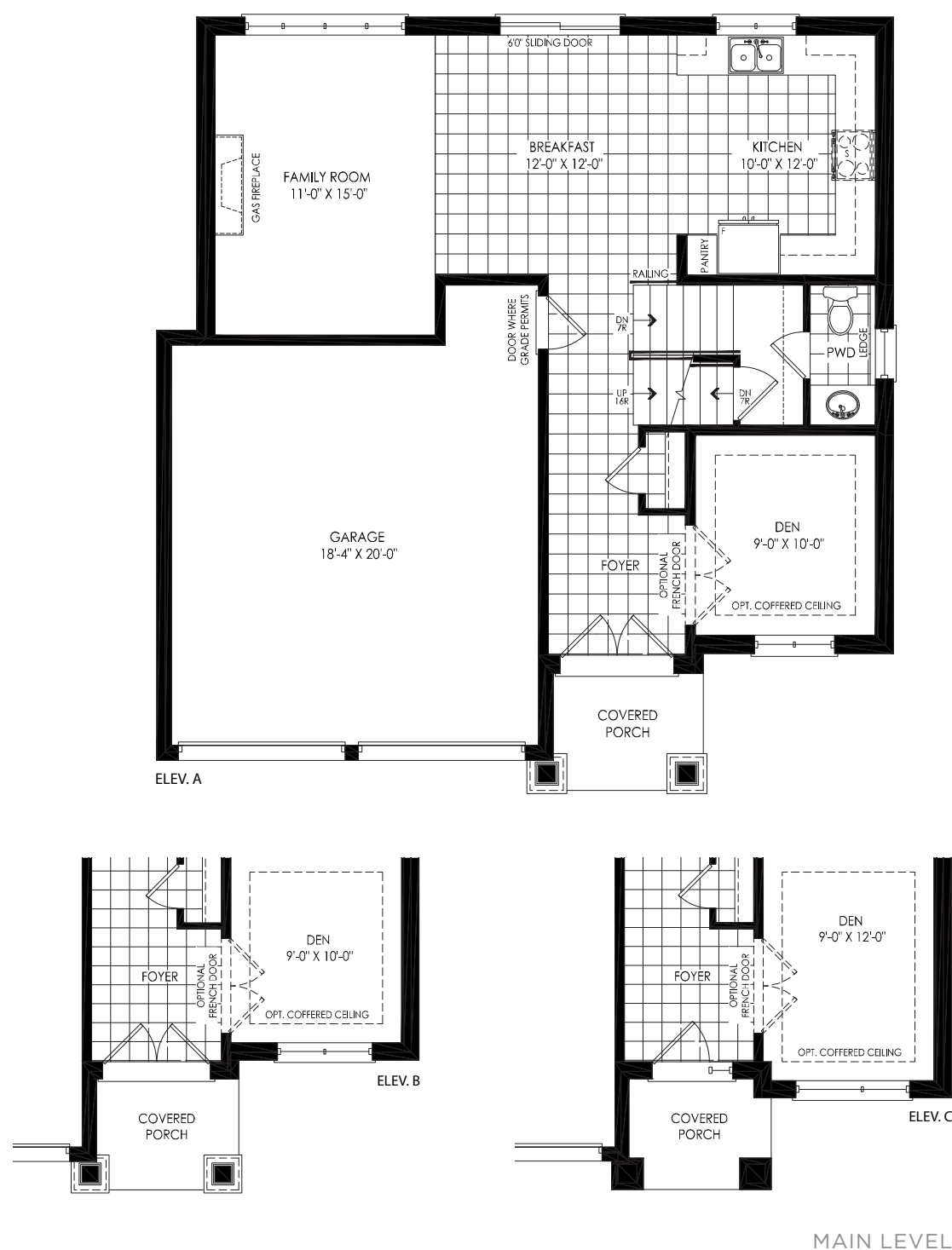
Elevation B | 1,953 sq.ft.

Elevation C | 1,987 sq.ft.

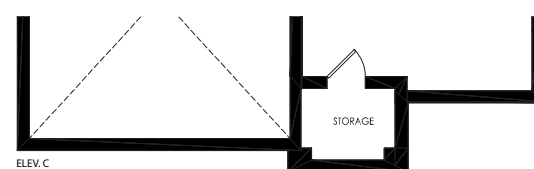
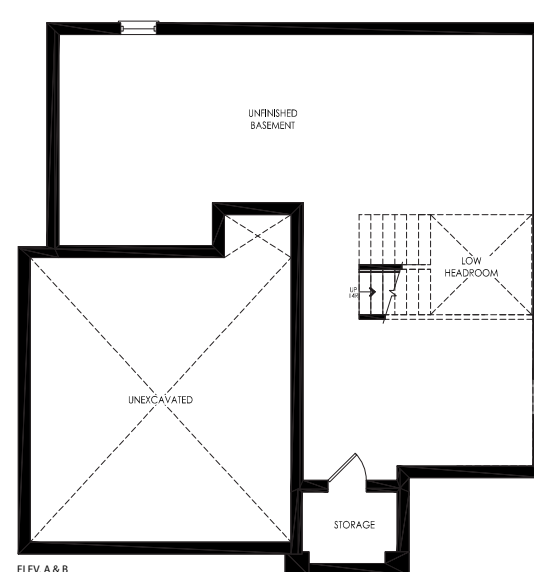


## LANGFORD

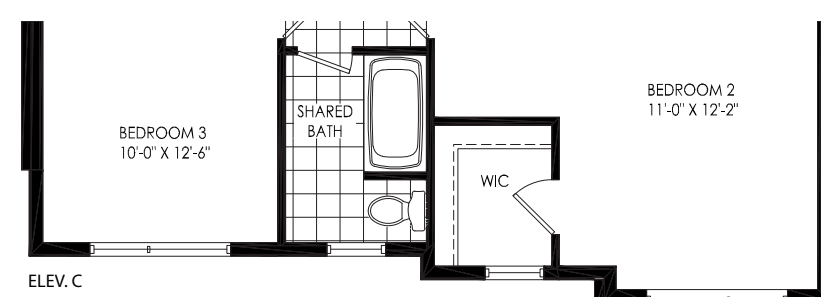
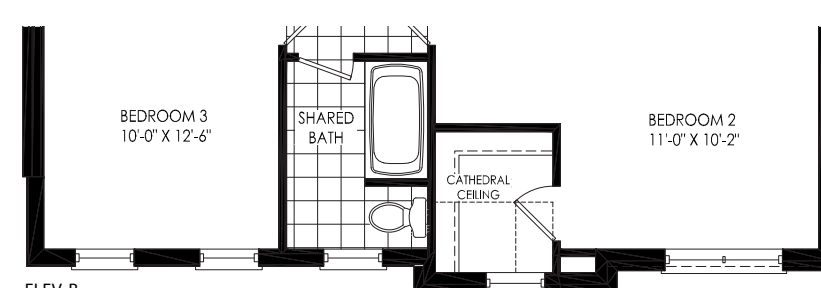
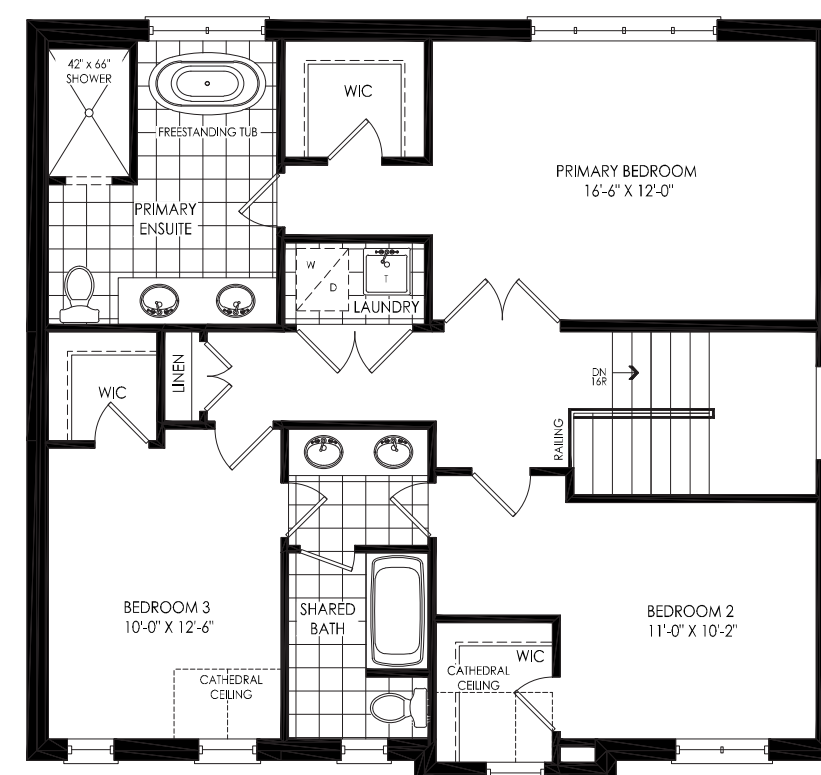
Elev. A | 1,957 sq.ft. • Elev. B | 1,953 sq.ft. • Elev. C | 1,987 sq.ft.



MAIN LEVEL



LOWER LEVEL



UPPER LEVEL