

50' LOT | **PORTLAND**

Elevation A | 3,803 sq.ft.



BONDHEAD



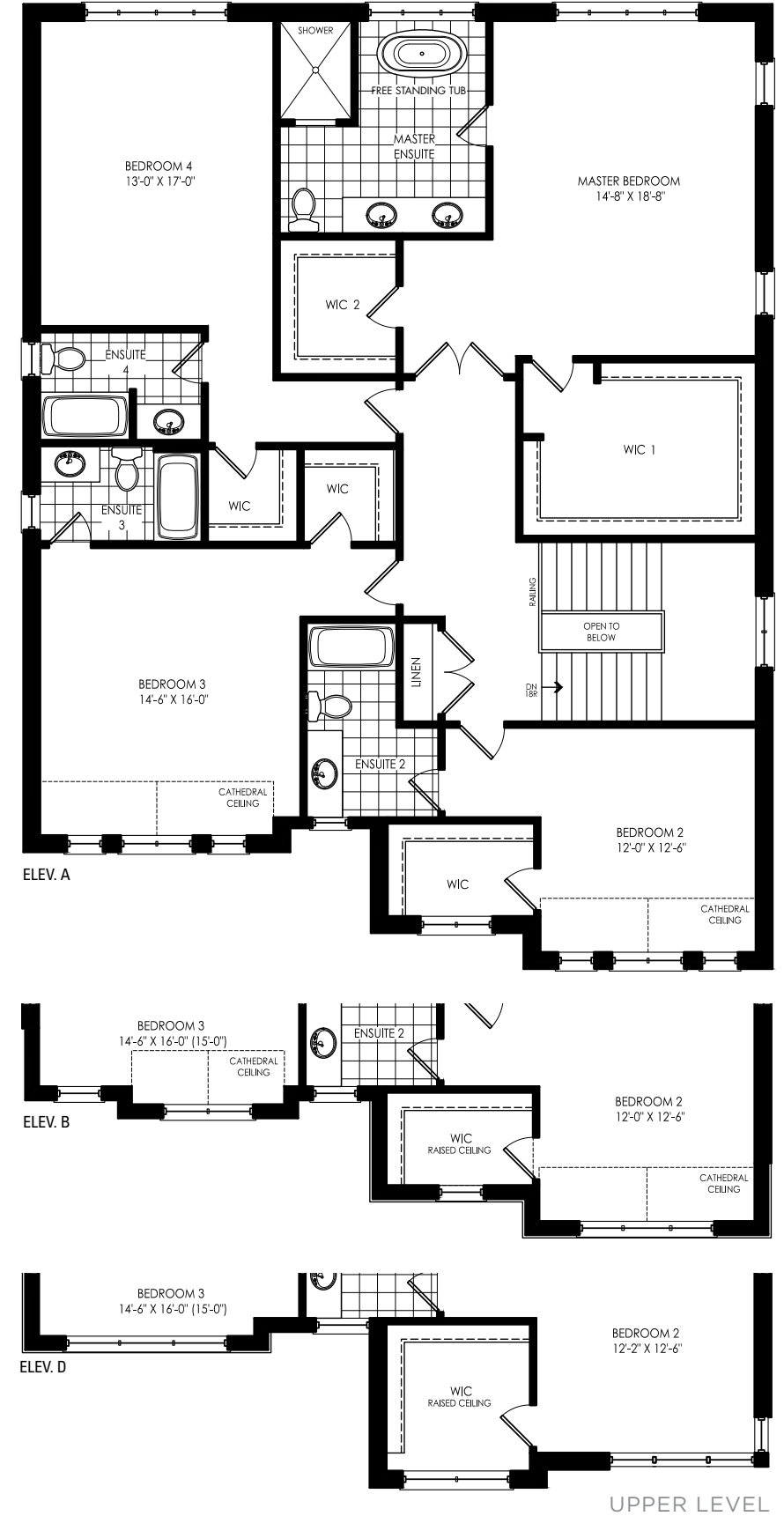
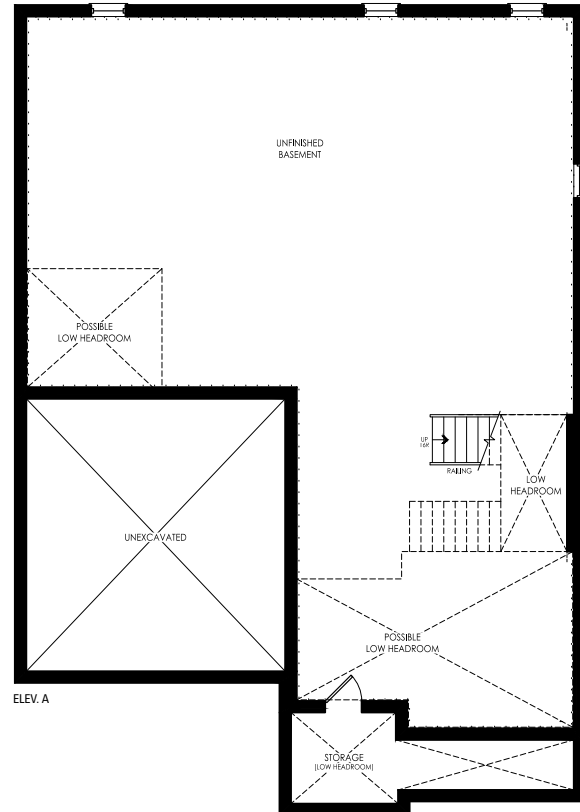
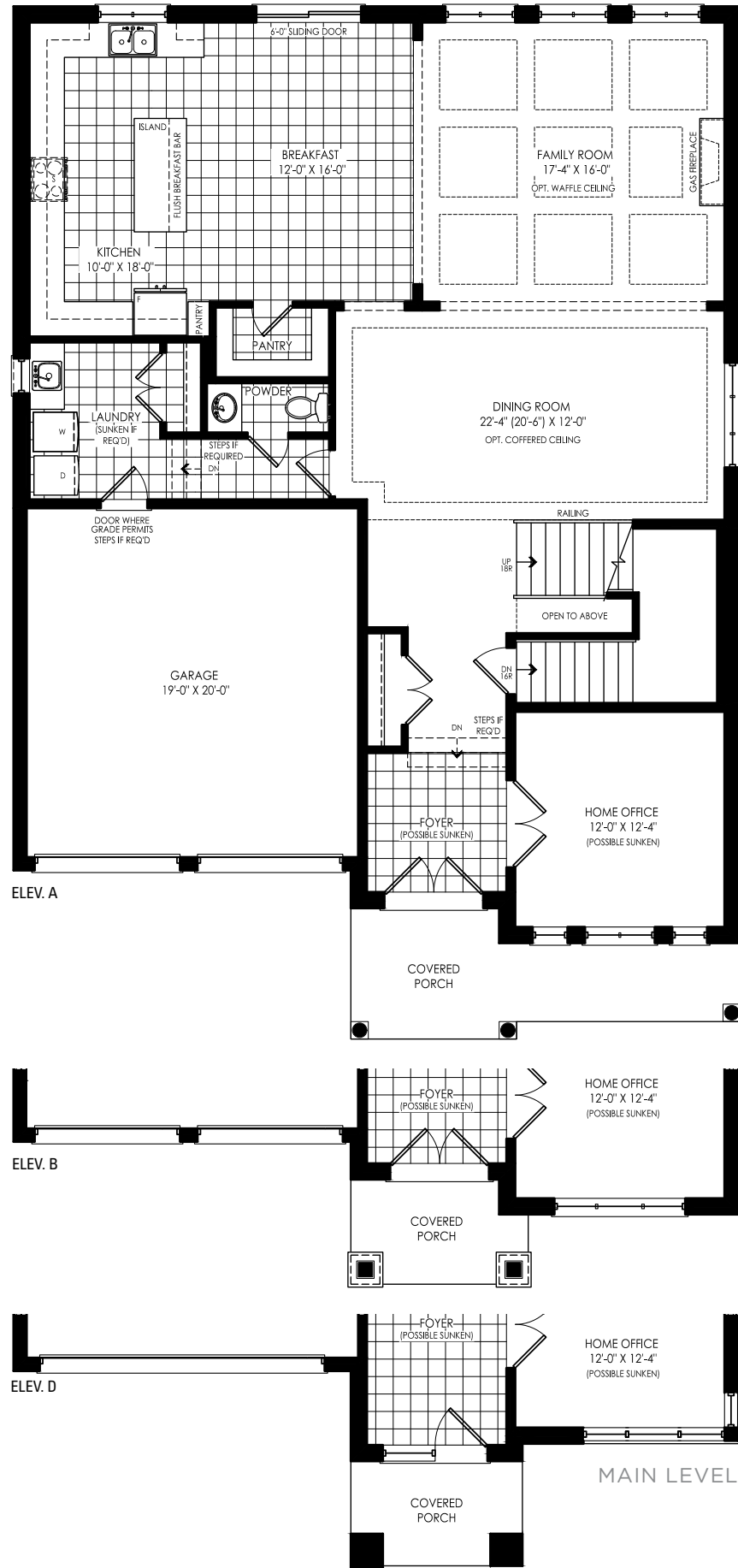
Elevation B | 3,796 sq.ft.

Elevation D | 3,854 sq.ft.



PORTLAND

Elev. A | 3,803 sq.ft. • Elev. B | 3,796 sq.ft. • Elev. D | 3,854 sq.ft.



Orientation of home may be reversed and purchaser agrees to accept the same. Steps and porches may vary at any exterior entrance ways due to grading variance. Actual usable floor space may vary from the stated floor area. All renderings are artist's concept. All exterior railings are black in colour where applicable. Dimensions, specifications and architectural detailing subject to minor modifications. E. & O.E. Copyright November 2021.

OPTIONAL 5TH BEDROOM UPPER LEVEL AVAILABLE